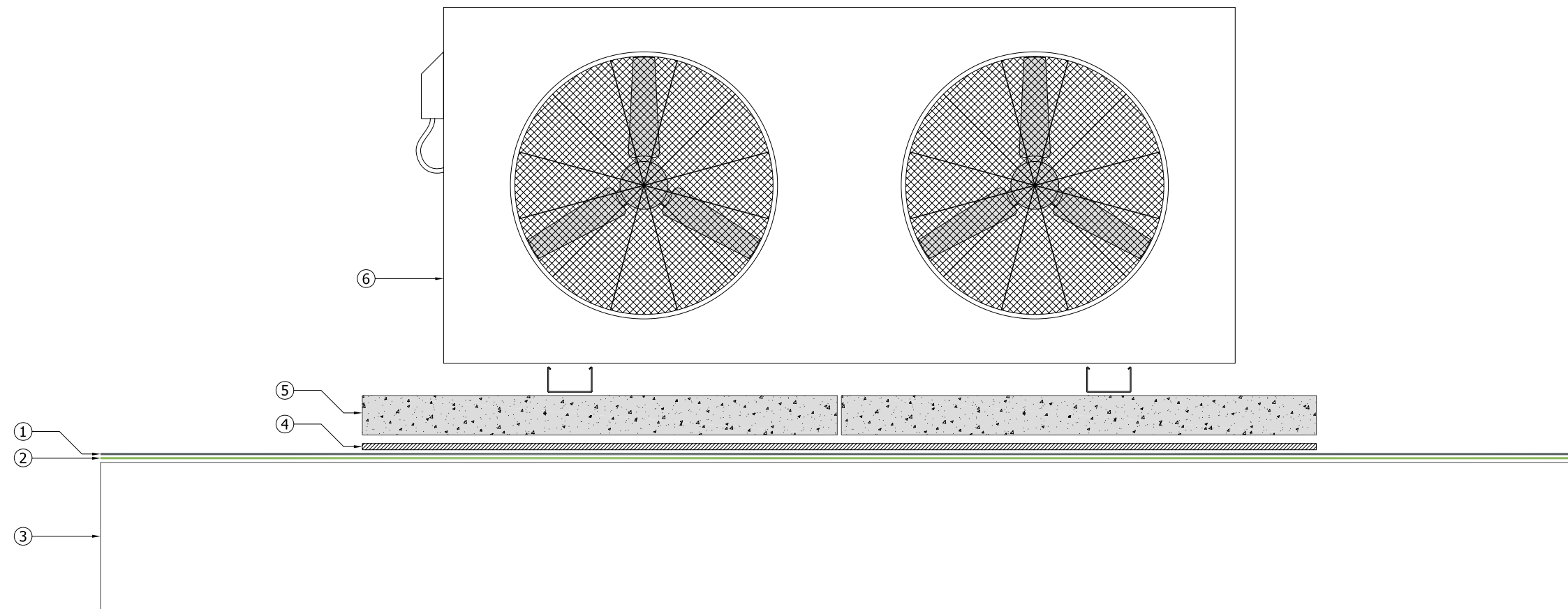


**Key**

- ① — Decaflex Top Coat applied in strict accordance with Sika Plastics Project Specification
- ② — Decaflex Embedment Coat with Reemat Premium GFM
- ③ Existing substrate prepared and primed in strict accordance with Sika Liquid Plastics Project Specification
- ④ Proprietary neoprene pad introduced to prevent abrasion of Decaflex Waterproofing System
- ⑤ Concrete paving slabs or similar appropriately proportioned pre-cast concrete plinth used to evenly distribute loadings exerted by the item of plant
- ⑥ Small item of plant rested on typical concrete paving slab supports to avoid point-loading



Sika Liquid Plastics  
 Sika House  
 Miller Street  
 Preston  
 Lancashire PR1 1EA  
 Telephone: 01772 259781  
 Email: [technical.customer.services@uk.sika.com](mailto:technical.customer.services@uk.sika.com)  
 Web: [www.liquidplastics.co.uk](http://www.liquidplastics.co.uk)

This drawing is solely intended to illustrate the correct application of Sika Liquid Plastics products and systems, it must be read in conjunction with the appropriate specification and current issue of relevant Technical Data Sheets. All elements bearing reference to structural and/or thermal design are shown indicatively and **should not be used** in whole or in part for any aspect of project design without consulting the relevant authorities.

For refurbishment projects, all aspects of the existing roof are deemed to be fully compliant with BS 6229:2003 [Code of Practice for Flat Roofs with Continuously Supported Coverings] or improved upon for instances where these standards are not met.

Site-specific details not covered by our range of Standard Details can be obtained by providing relevant information to the email address shown.

Project N <sup>o</sup>	
DWG N <sup>o</sup>	Revision
Project:	
Drawing Title: Waterproofing Application Detail arrangement showing typical small plant support plinth	
Scale: NTS @ A3	Drawn:
Date:	

